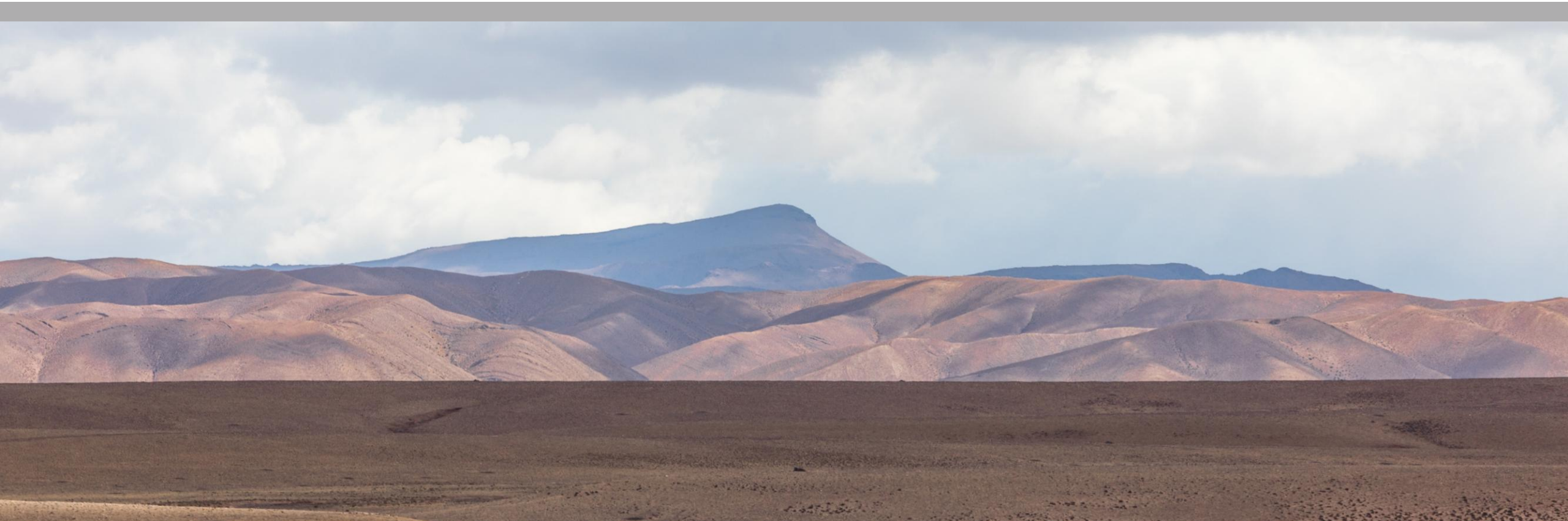


Building A Drill-Ready Portfolio

2026



CSE: PRCG

www.precoregold.com

Forward Looking Statements

This presentation contains forward-looking statements. All statements, other than of historical facts, that address activities, events or developments that the Company believes, expects or anticipates will or may occur in the future including, without limitation, future geological work or exploration programs, the potential positive exploration results, the timing of the exploration results, the ability of the Company to finance exploration programs and the potential mineralization or potential mineral resources are forward-looking statements. Forward-looking statements are generally identifiable by use of the words "will", "should", "continue", "expect", "anticipate", "estimate", "believe", "intend", "to earn", "to have", "plan" or "project" or the negative of these words or other variations on these words or comparable terminology. Forward-looking statements are subject to a number of risks and uncertainties, many of which are beyond the Company's ability to control or predict, that may cause the actual results of the Company to differ materially from those discussed in the forward-looking statements. Factors that could cause actual results or events to differ materially from current expectations include, among other things, failure to meet expected, estimated or planned exploration expenditures, failure to establish estimated mineral resources, the possibility that future exploration results will not be consistent with the Company's expectations, general business and economic conditions, changes in world gold markets, sufficient labor and equipment being available, changes in laws and permitting requirements, unanticipated weather changes, title disputes and claims, environmental risks as well as those risks identified in the Company's annual Management's Discussion and Analysis. Should one or more of these risks or uncertainties materialize, or should assumptions underlying the forward-looking statements prove incorrect, actual results may vary materially from those described and accordingly, readers should not place undue reliance on forward-looking statements. Although the Company has attempted to identify important risks, uncertainties and factors which could cause actual results to differ materially, there may be others that cause results not to be as anticipated, estimated or intended. The Company does not intend, and does not assume any obligation, to update these forward-looking statements except as otherwise required by applicable law.

Neither the Canadian Securities Exchange nor its Regulation Services Provider accepts responsibility for the adequacy or accuracy of this release.

Qualified Person

The scientific and technical content contained within this corporate presentation has been reviewed and approved by Mr. Louis Gariépy, P.Eng (OIQ #107538), Lead Technical Advisor of Precore Gold Corp., who is a "qualified person" within the meaning of National Instrument 43-101 – Standards of Disclosure for Mineral Projects.



Why Invest in Precore Gold Corp.



Focused on generating shareholder returns and capitalizing on current price of gold



Executives with track record of making significant discoveries and developing world class gold assets



Portfolio of projects in Tier-1 mining jurisdictions with mature infrastructure and political stability



Tight capital structure with strong insider positions

Executive Management and Board of Directors

PAUL A. DUMAS
Executive Chairman



- +30 years in corporate finance, investment banking, marketing, operational oversight and shareholder value-creation
- Past Executive Vice President, Finance & Chief Financial Officer at Osisko Metals Inc

LOUIS GARIEPY P.ENG
Director



- Geological engineer +30 years of mining experience in Québec and Latin America
- VP, Exploration of O3 Mining Inc. (multi-million oz Au Marban Project) until takeover by Agnico-Eagle
- Past Exploration Manager of Anglo American PLC and IAMGOLD in Peru

MICHAEL DAKE
President, CEO &
Director



- +20 years mining executive with extensive experience in corporate leadership, investor relations
- Board governance across various mineral exploration companies

MARTIN NICOLETTI
Chief Financial Officer



- +35 years advising on capital market transactions, accounting, auditing and financial compliance services.
- Chartered Professional Accountant (CPA)

CLAUDE CHARRON
Director



- +20 years Board experience
- Last as Board member of Osisko Metals Inc, Nadoli Capital (Brunswick Exploration Ltd.) and Typhoon Exploration.
- Chartered Professional Accountant (CPA)

ROBERT HORSLEY
Director

- +19 years in finance, investor relations, marketing, management, and merger and acquisitions to public companies in mineral exploration, telecom, consumer packaged goods, e-sports and technology.

Technical Advisor, Jacques Trottier, Ph.D.



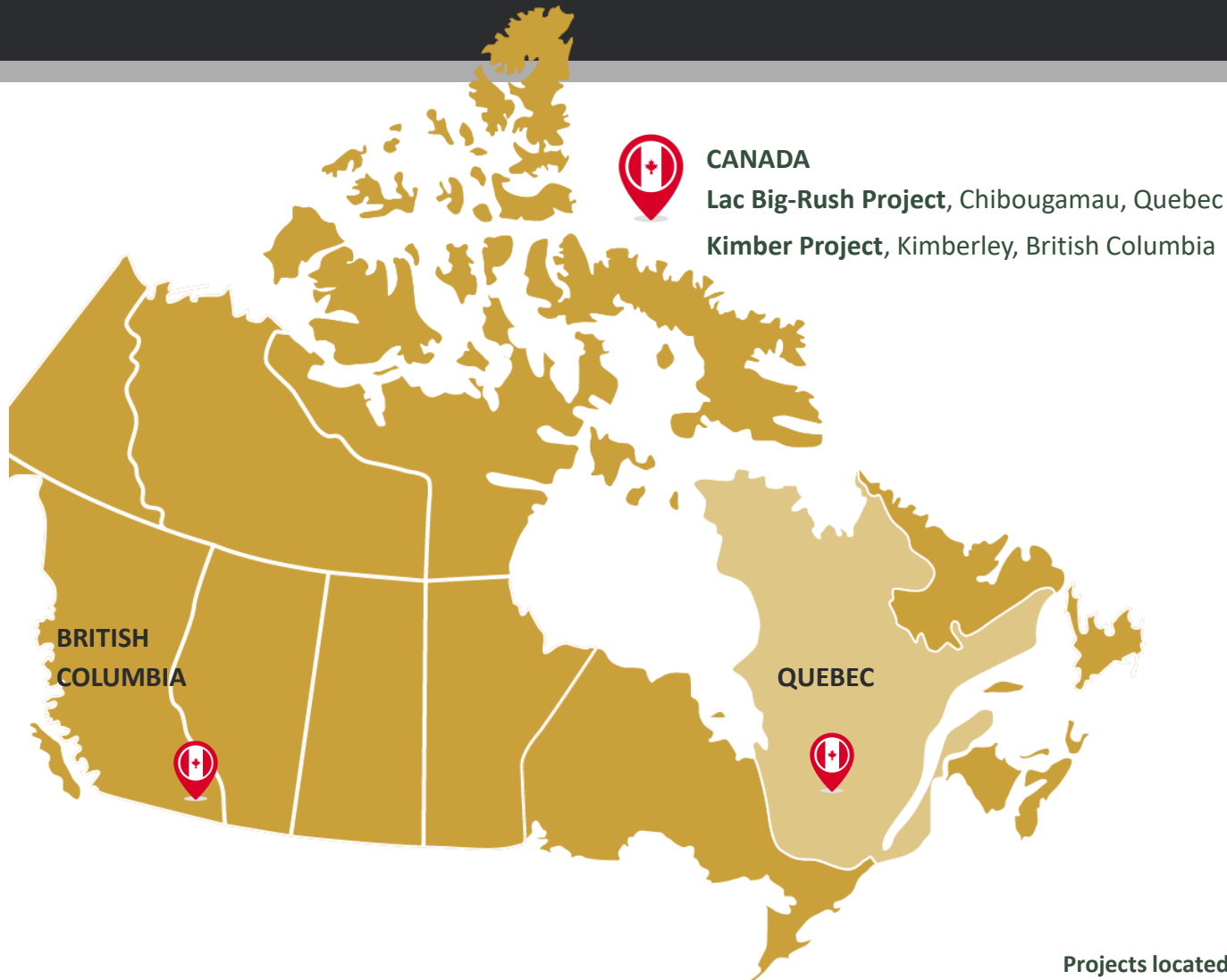
Mr. Trottier Ph.D (1955 – 2026) was an early member of the Precore Gold team, and his great depth of geological knowledge and decades of successful experience, especially in Peru, was **instrumental in the evaluation** of the Company's **Arikepay Project in Southern Peru**.

It is in great part, that his input and his excitement over Arikepay, led to selecting it as Precore's flagship project.

Mr. Trottier was the **founder and Executive Chairman of the Board of Amex Exploration Inc**, a junior gold exploration company. Mr. Trottier is commended for several significant gold deposit discoveries at their 100%-owned **Perron Gold Project**, located in Quebec, Canada. As per their December 2024 Preliminary Economic Assessment, the Perron Gold Project has over 1 million ounces of gold at an average diluted grade of 5.26 grams per tonne, with a life of mine of 10 years at a production rate of 101,000 ounces/year.

“Jacques, your insight, enthusiasm and passion for this industry will forever be missed,” Paul A. Dumas.

Precore Gold Corp. Project Locations



Projects located in prolific mining camps within regions that are well established and pro-mining.



Arikepay Project

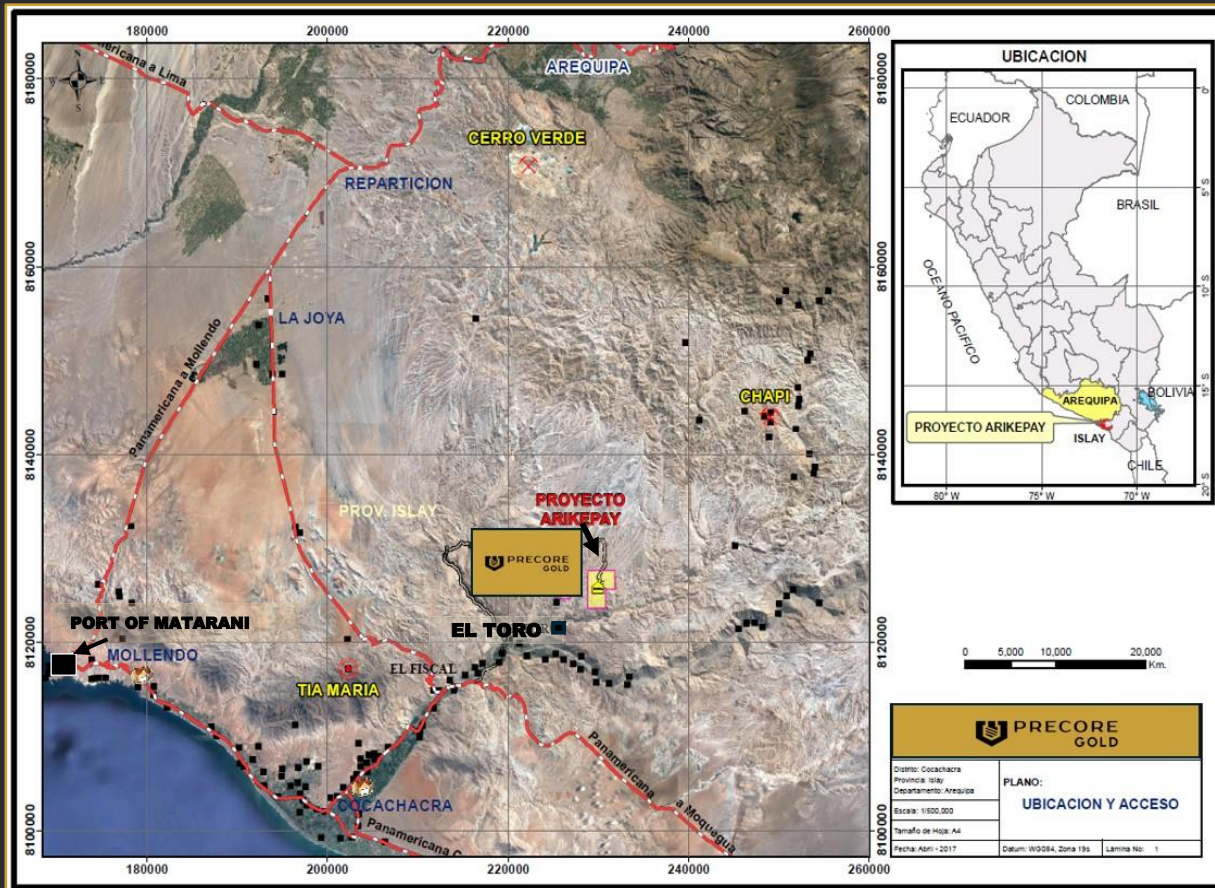
The Arikepay Project – Arequipa, Peru

- Option agreement with Alta Copper Corp. (now Fortescue Ltd) to acquire 100% interest in Arikepay Project.
- **Agreement entirely transacted in Canadian dollars.**
- **All terms of the agreement can be accelerated to seize on drilling successes and bullish gold price environment.**
- Precore can earn initial 51% interest by:
 - Issuing 1.5M shares of the Company;
 - Issuing additional 1M shares within 4 months after the date of issuance of the initial shares; and
 - Incurring minimum of \$5.5M in expenditures on Arikepay within 5 yrs, with \$1.5M in the first 3 yrs.
- Precore can earn additional 24% interest by:
 - Issuing an additional 1M shares;
 - Incurring additional minimum expenditures of \$3.5M on the property; and
 - Make annual cash payments to the Vendor of \$75k during each of the 5 yrs following the 5th anniversary of the Option Agreement, for total cash payments of \$375k.
- May acquire an additional 5% in Arikepay by identifying an inferred mineral resource estimate "MRE".
- Can acquire remaining 20% (totaling 100%) by paying additional \$1M (or equivalent in shares) and a 1.5% NSR.



Map of Arikepay Project location among major deposits in Southern Peru

The Arikepay Project – Access



Map of Arikepay Project location - ease of access

- 110 km south of Arequipa city, province of Arequipa, Southern Peru.
- Covers an area of 1,800 ha at ~1,200 m above sea level.
- Easily accessible by the Panamerican highway.
- Town of El Toro 73km to the major Port of Matarani.
- Port of Matarani supports booming regional mining.
- In February, Matarani awarded US\$600M extend the Southern International Terminal; increase cargo handling by 50% and mineral resource storage capacity by 22%.

The Arikepay Project – Geological Location

Excellent geological location:

- Multiphase intrusions of the Linga-Yarabamba.
- Hosted by Jurassic and Cretaceous rocks.
- Hidden deposit, covered by recent conglomerates and tuffs.

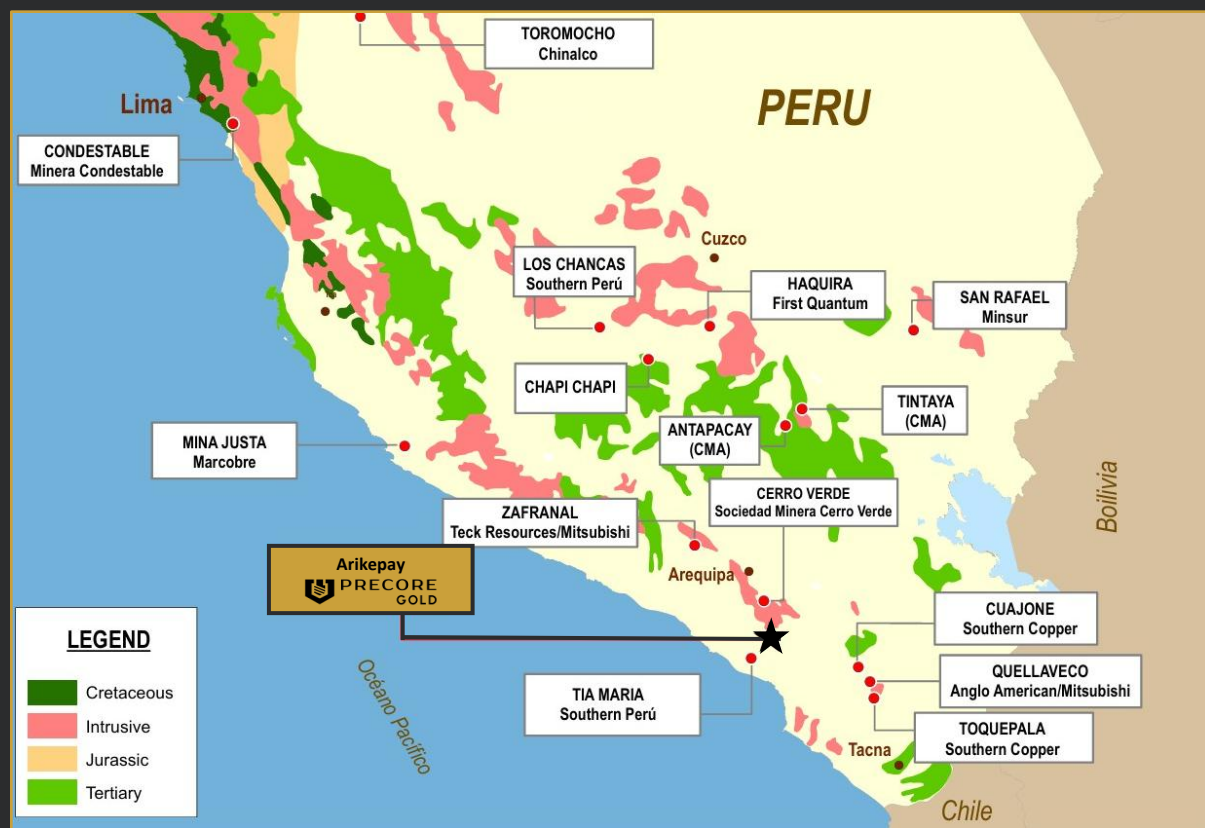
Favorable structural setting:

- Located within the Andean structural system
- Between the Cincha-Lluta-Incapuquio fault system and the Tambo-Locumba fault.
- At the intersection of the Coccochacra-Tia Maria lineament and the Tambo-Locumba fault.

Arikepay is situated in a highly prospective area with favorable structures and rocks. Similar to Tia Maria and Cerro Verde, Arikepay is associated with NW-SE structures.



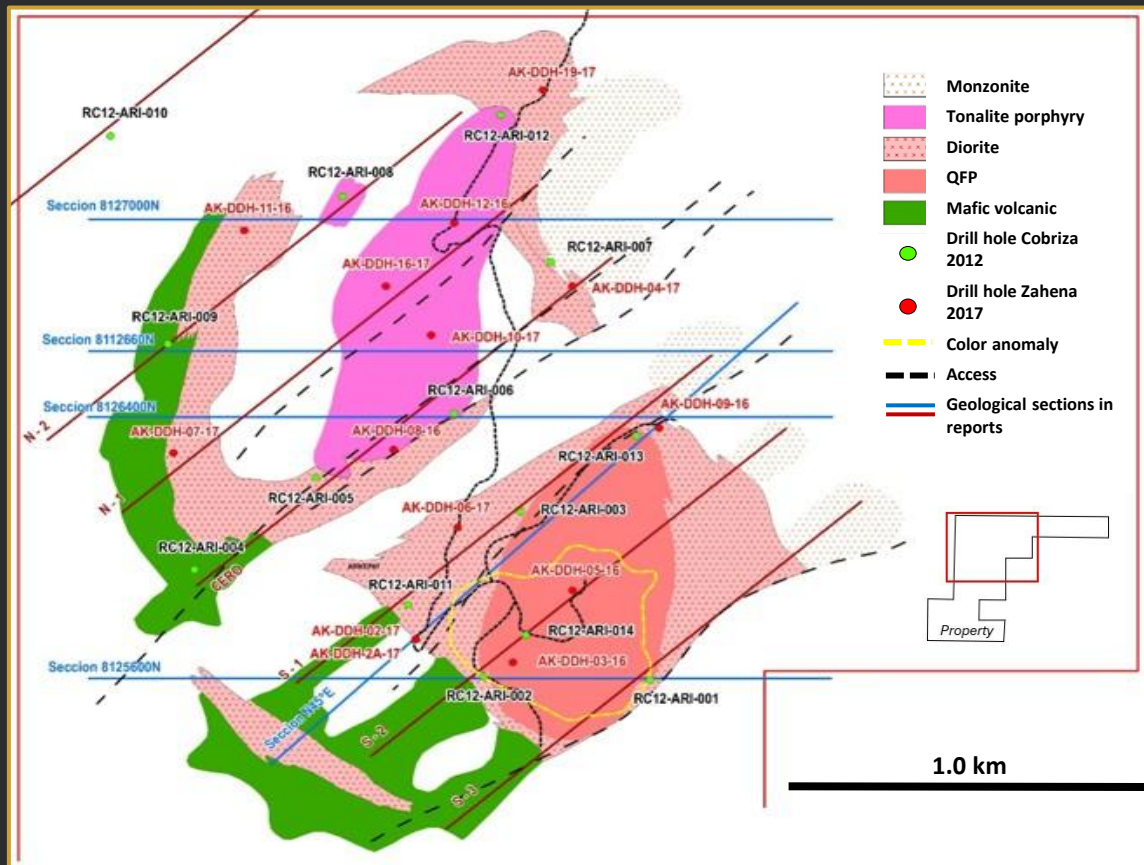
The Arikepay Project – Mining in Peru and the Arequipa District



Map of Arikepay Project location within the regional geological setting

- Mining makes up ~12% of Peru's GDP and 59% to 65% of its exports.
- Globally, 2nd largest copper producer and top 10 of gold producers.
- Supportive mining-friendly legislation welcoming foreign investment.
- Prolific mining region hosting several of Peru's largest mines:
- **Cerro Verde Mine (Peru's largest copper mine) Freeport-McMoRan, Sumitomo, Buenaventura)**
 - **Annual Production:** ~500,000 tonnes of copper.
 - **Reserves:** 4.57 billion tonnes @ average grade of **0.35% copper**.
 - **Life of Mine:** Projected to continue until 2052. (Technical Summary, 2025)
- **Tía María Project (Southern Copper Corp.)**
 - **Annual Production:** ~120,000 tonnes of copper cathodes.
 - **Reserves:** 711 million tonnes @ average grade of **0.37% copper**.
 - **Life of Mine:** Approximately 20 years. (Technical Report, 2021)
- **Zafrenal Project (Teck 80%-Mitsubishi 20%)**
 - **Annual Production:** ~126,000 tonnes of copper over first five years.
 - **Reserves:** 440.7 million tonnes @ average grade of **0.38% copper**.
 - **Life of Mine:** Expected to be 19 years+. (Teck deck, 2016)

The Arikepay Project – Local Geological Occurrence



Map of Arikepay Project within local geological occurrence

- Arikepay is located along the **Southern Peru Copper-Gold Belt** and part of the **Central Andes porphyry belt**.
- Dominated by porphyry copper-gold systems, often associated with calc-alkaline intrusive rocks (granodiorite to diorite).
- Major deposits like **Cerro Verde** and **Zafranal** occur near major crustal-scale fault zones, which acted as conduits for hydrothermal fluids and magmatic intrusions.
- Arikepay is a **multi-phase Au-Cu intrusion complex** including tonalite porphyries, diorites, monzonites and quartz feldspar porphyries.

The multiphased complex has been recognized over an area of 2 km x 2 km; remains open laterally in all directions and at depth.

The Arikepay Project – Best Historical Drill Intercepts

Best historical drill intercepts in the Cu-Au-Ag quartz-feldspar porphyry include*:

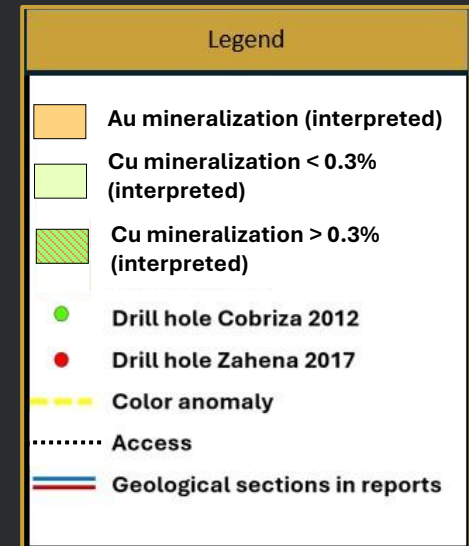
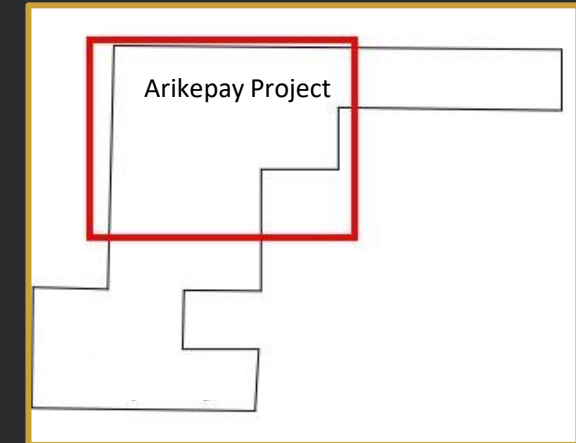
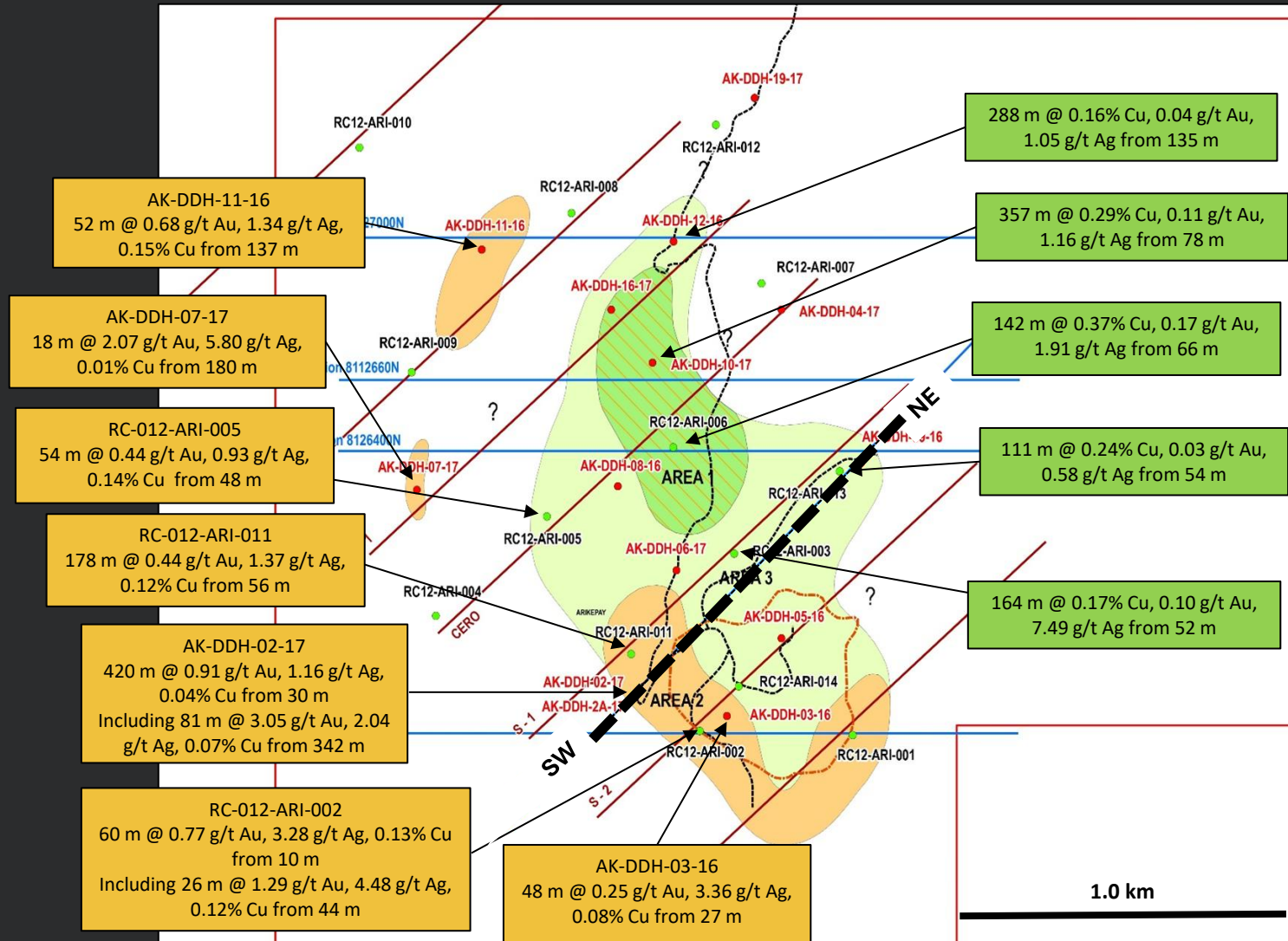
- 142 m @ 0.37% Cu, 0.17 g/t Au, 2.02 g/t Ag from 66 m in hole RC-012-ARI-006
- 357 m @ 0.29% Cu, 0.11 g/t Au, 1.16 g/t Ag from 78 m in hole AK-DDH-10-17
- 111 m @ 0.24% Cu, 0.03 g/t Au, 0.58 g/t Ag from 54 m in hole AK-DDH-09-16

Best historical drill intercepts in the Au-Ag-Cu diorite porphyry include*:

- 420 m @ 0.91 g/t Au, 1.16 g/t Ag, 0.04% Cu from 30 m in hole AK-DDH-02-17
 - Including 81 m @ 3.17 g/t Au, 2.12 g/t Ag, 0.07% Cu from 342 m
- 66 m @ 1.23 g/t Au, 0.36 g/t Ag, 0.03% Cu from 27 m in hole AK-DDH-02A-17
- 60 m @ 0.77 g/t Au, 3.28 g/t Ag, 0.14% Cu from 10 m in hole RC-012-ARI-002
 - including 26 m @ 1.29 g/t Au, 4.48 g/t Ag, 0.12% Cu from 44 m

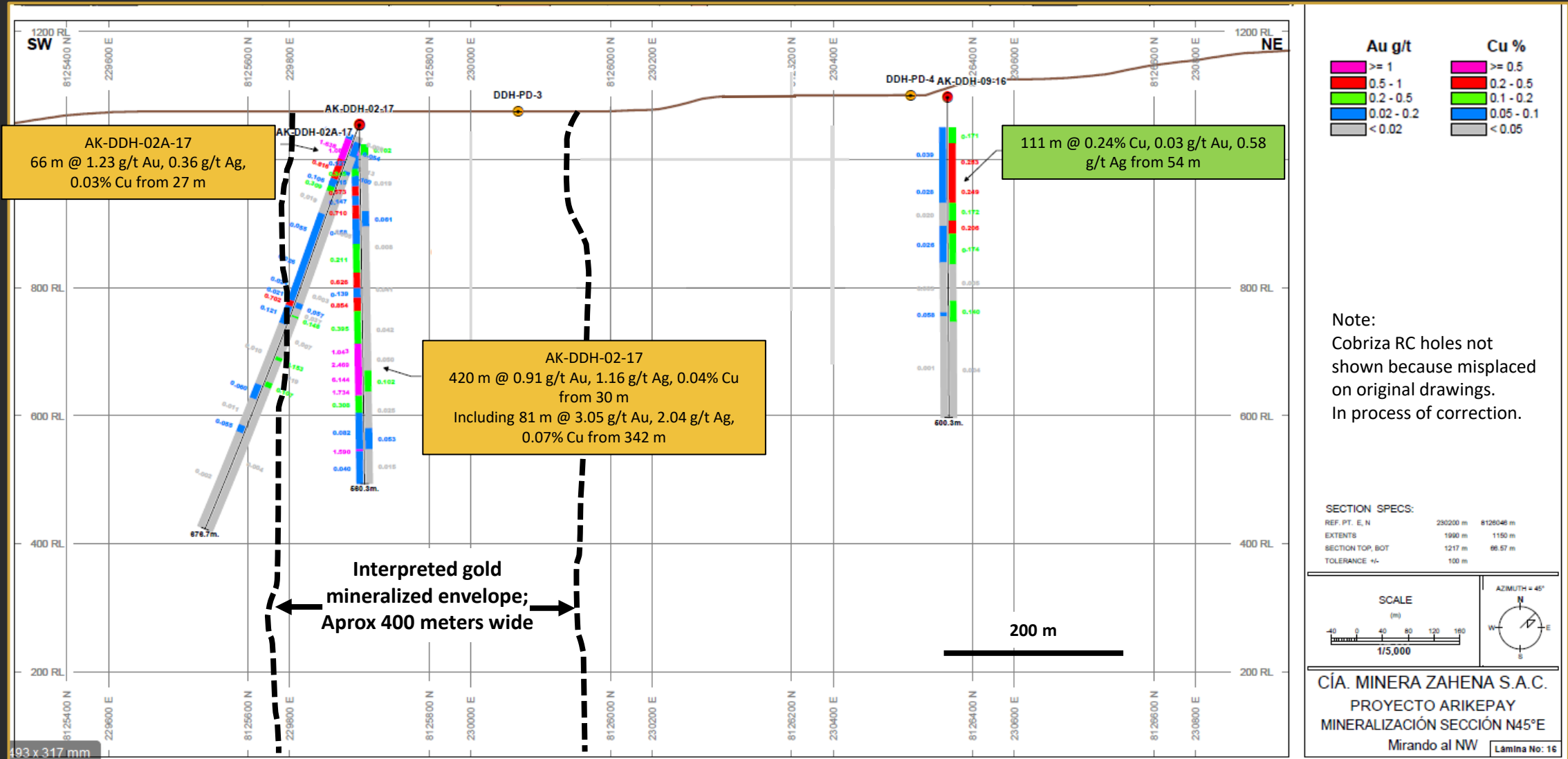
- Approx. **13,000 meters** of past drilling
- RC holes done by Cobriza Metals Peru S.A.C. in 2012.
- DDH drill holes done by Campania Minera Zahena S.A.C. in 2017.
- Copper grades very similar to those found at nearby porphyry projects, **Cerro Verde, Tia Maria & Zafranal**.
- Due to geological working over millions of years, two almost distinguishable mineralized “zones” have been created at Arikepay: one **copper** and one **gold**.

The Arikepay Project – Best Historical Drill Intercepts



Map including best historical drill intercepts at Arikepay Project (Source: Enrique Bernuy 2020)

The Arikepay Project – Cross Section Looking NW



Drill Core – AK-DDH-02-17

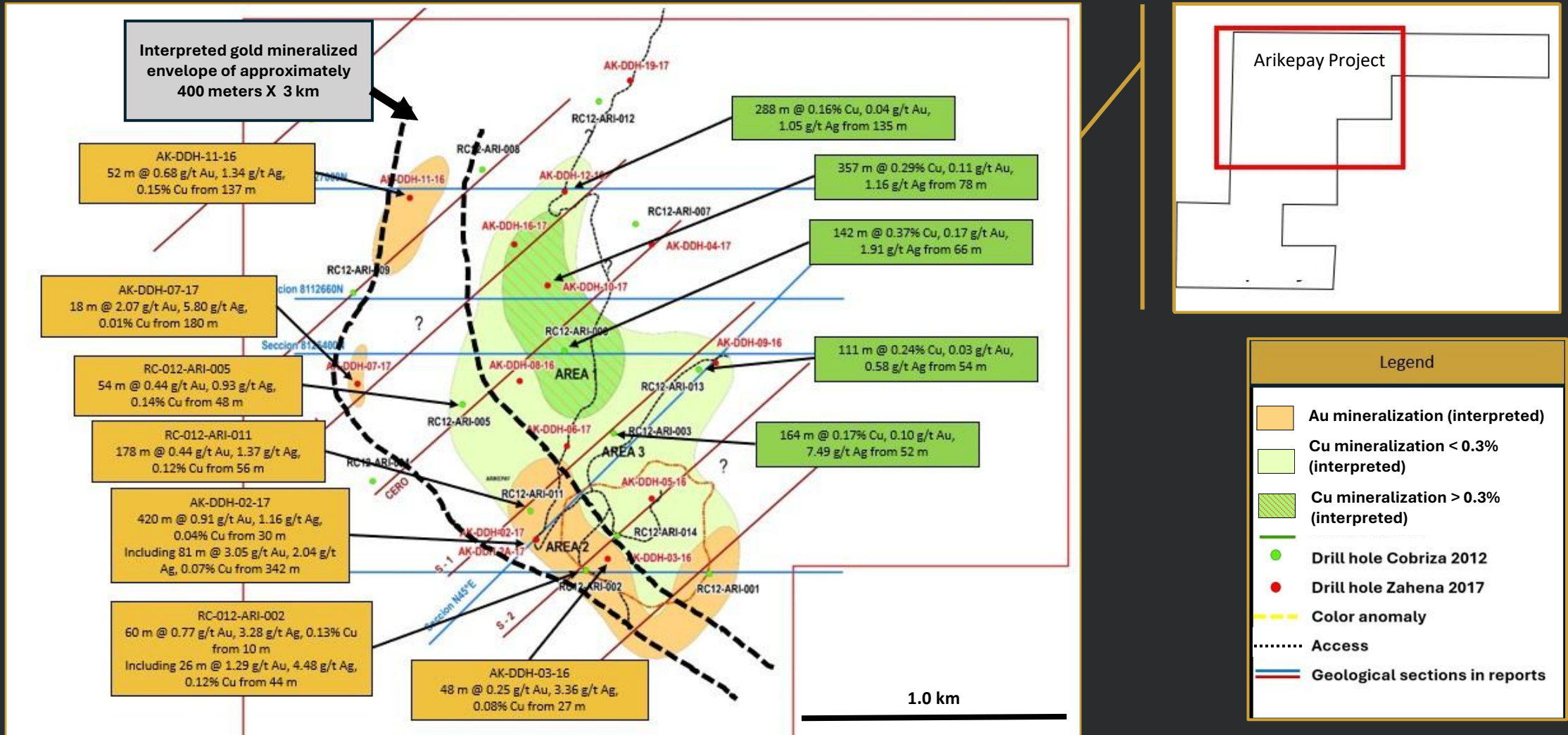


- Diorite porphyry
- Propylitic alteration
- Quartz veinlets stockwork
- Mineralization: pyrite magnetite gold
- This sample DS003976 returned 3.00 m @ 20.5 g/t Au, 4.4 g/t Ag
- Note the low core angle of the mineralized quartz veinlets carrying the gold. All drill holes in the auriferous diorite porphyry, except one, were drilled vertically.

Therefore, it is reasonable to think that the gold-rich structures haven't been tested properly and consequently the average gold grade of the envelope is underestimated.

This observation constitutes the basis of Precore Gold's exploration concept at Arikepay.

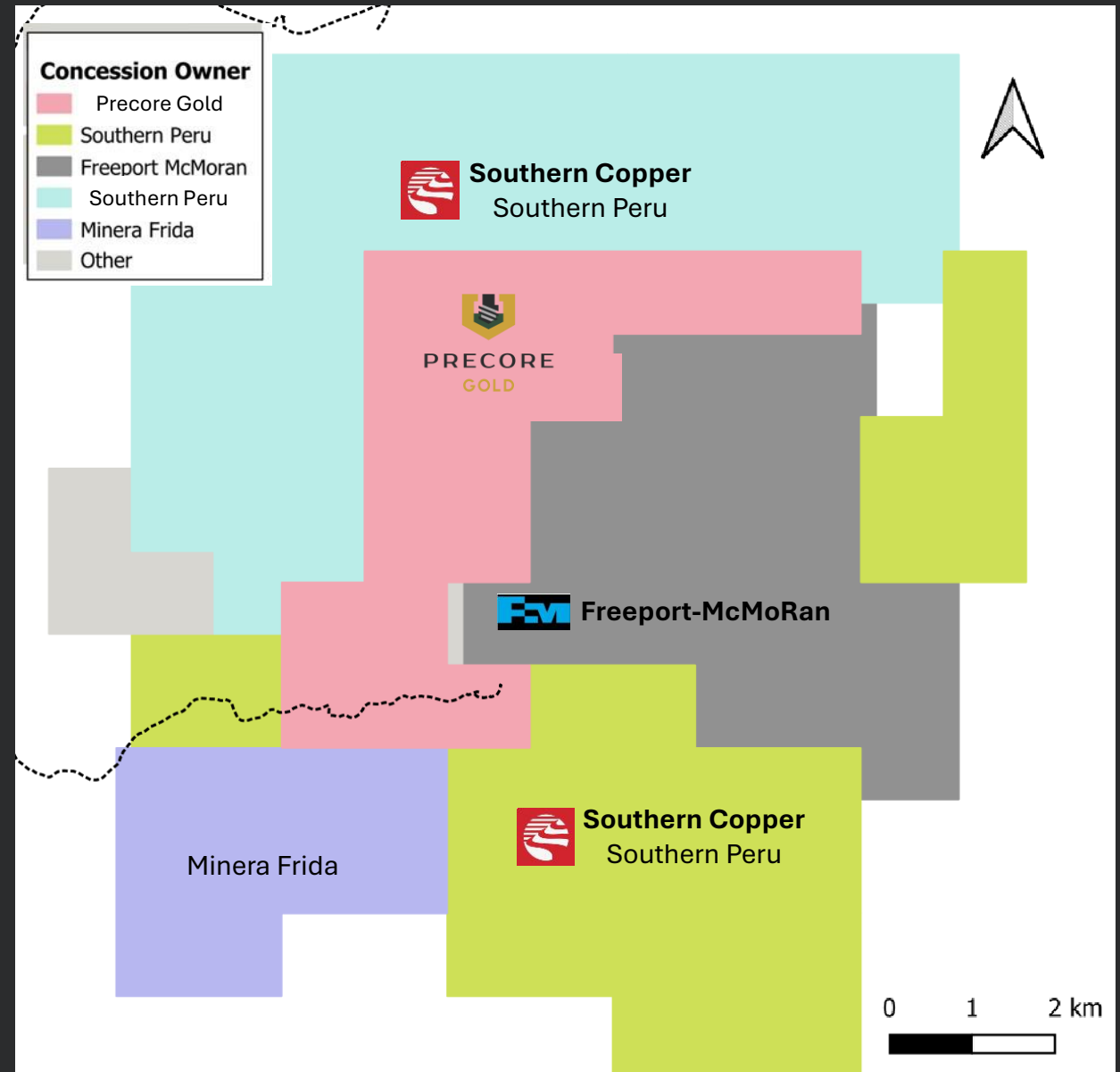
The Arikepay Project – Gold Mineralized Envelope – 0.4 X 3.0 km and Open



Map including best historical drill intercepts at Arikepay Project (Source: Enrique Bernuy 2020)

The Arikepay Project - Exploration concessions

- Surrounded by Tier-1 producers
- Prospectivity of the area is increasingly being recognized
- Most recently Freeport-McMoRan claims land to the Southeast of Precore



Precore Gold Arikepay Project exploration concessions and surrounding concession owners

The Arikepay Project – 2026 Brownfield Exploration Program Kick-Off



Historical DDH core warehoused in the town of El Toro.



Access road to Arikepay: easy, unobstructed, direct access at 1,200m above sea level.



Historical drill collar from 2017 campaign, easily accessible for follow-up work.



Change of ground color on the approach to an alteration zone at Arikepay.

- ✓ Historical data compilation.
- ✓ Set up base camp in nearby town of El Toro to support work at site and community outreach.
- ✓ Refresh access road to the project; removal of wind drift sand for ease of access.
- Conduct an airborne magnetic survey and an IP (induced polarization) geophysical survey.
- Drill permitting in progress.

Advancing (AIA) drill permitting for upcoming campaign



Precore Gold has established a base camp in the neighboring town of El Toro.

- FTA (Environmental Technical Sheet): low environmental impact exploration activities request.
- CIRA: archeological base line study includes existing permit with updated drill pad location.
- AUA: water use permit for exploration.
- SBN: surface land use permit, includes details such as coordinates of pads, roads, camp site, etc.

Obtention of above permits culminates in granting of Authorization to Initiate Activities (AIA)



Lac Big-Rush Project

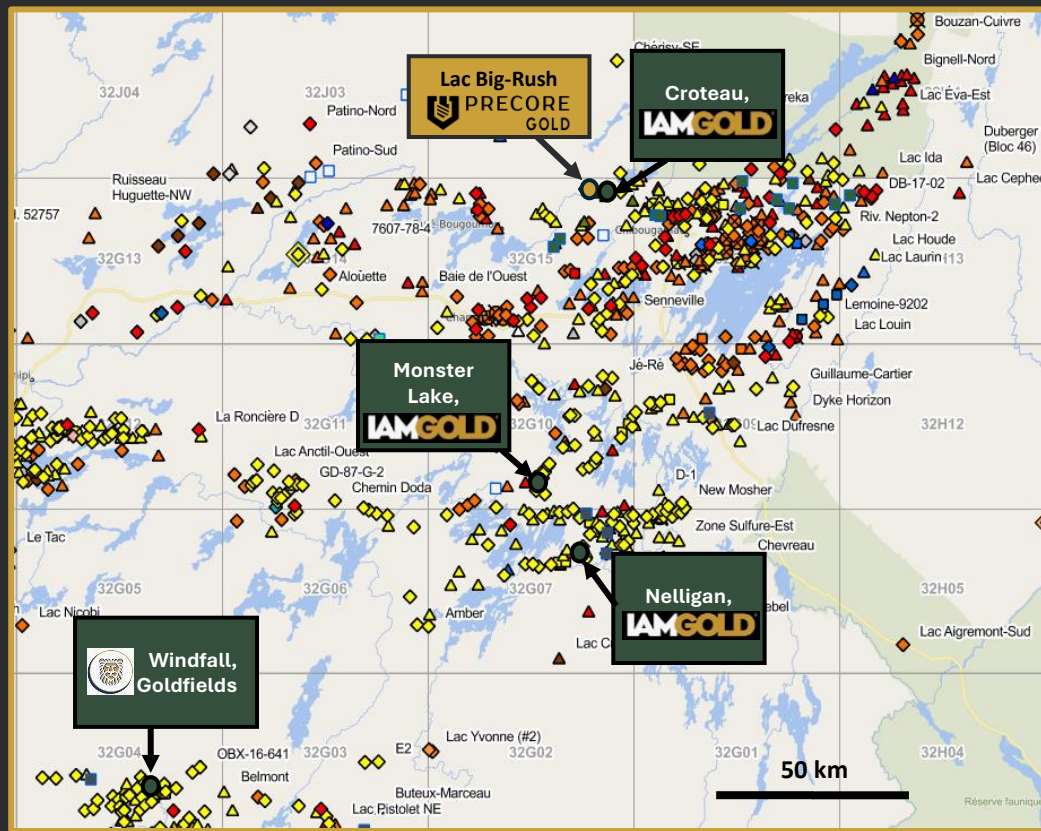
The Lac Big-Rush Project – Quebec, Canada

- Precore owns 100% interest in Lac Big-Rush.
- Option Agreement with private vendor was accelerated in February, 2026, given property's high discovery potential & recent M&A activity in the Chibougamau mining camp.
- Vendor will retain a 2% NSR from proceeds of any commercial production. Precore retains right to purchase up to 1,5% of remaining NSR for the sum of CAD\$1M at any time.
- Composed of 45 claim units covering approximately 2,490 hectares.
- ~32 kilometers from town of Chibougamau, accessible year-round via highway 113 and well-travelled gravel roads.
- Mature regional mining infrastructure in place.



Map of Lac Big-Rush, ease of access to location

The Lac Big-Rush Project – Geological and Regional Highlights



Map of Lac Big-Rush project location among major deposits in Chibougamau, Quebec³

- Chibougamau Mining Camp has a total of 1.6 B lbs copper lbs. and 3.2 Moz gold mined since the 1950's, mostly from underground mines¹.
- A region experiencing a revival of interest from miners advancing important projects:
 - **iamgold's** Nelligan project host's 73.5 Mt at 0.84 g/t Indicated and 129.5 Mt at 0.87 g/t Inferred (Iamgold PR, February 23, 2023)
 - December 19, 2025, iamgold completed acquisition of Northern Superior to create "Nelligan Mining Complex", one of the largest pre-production gold camps in Canada with M&I of 3.75 Moz Au and Inferred Mineral Resources of 8.65 Moz Au.
 - Neighboring Croteau Project (now iamgold) with Inferred near surface resources of 640,000 oz at 1.73 g/t hosted in iron carbonate altered shear system with quartz².

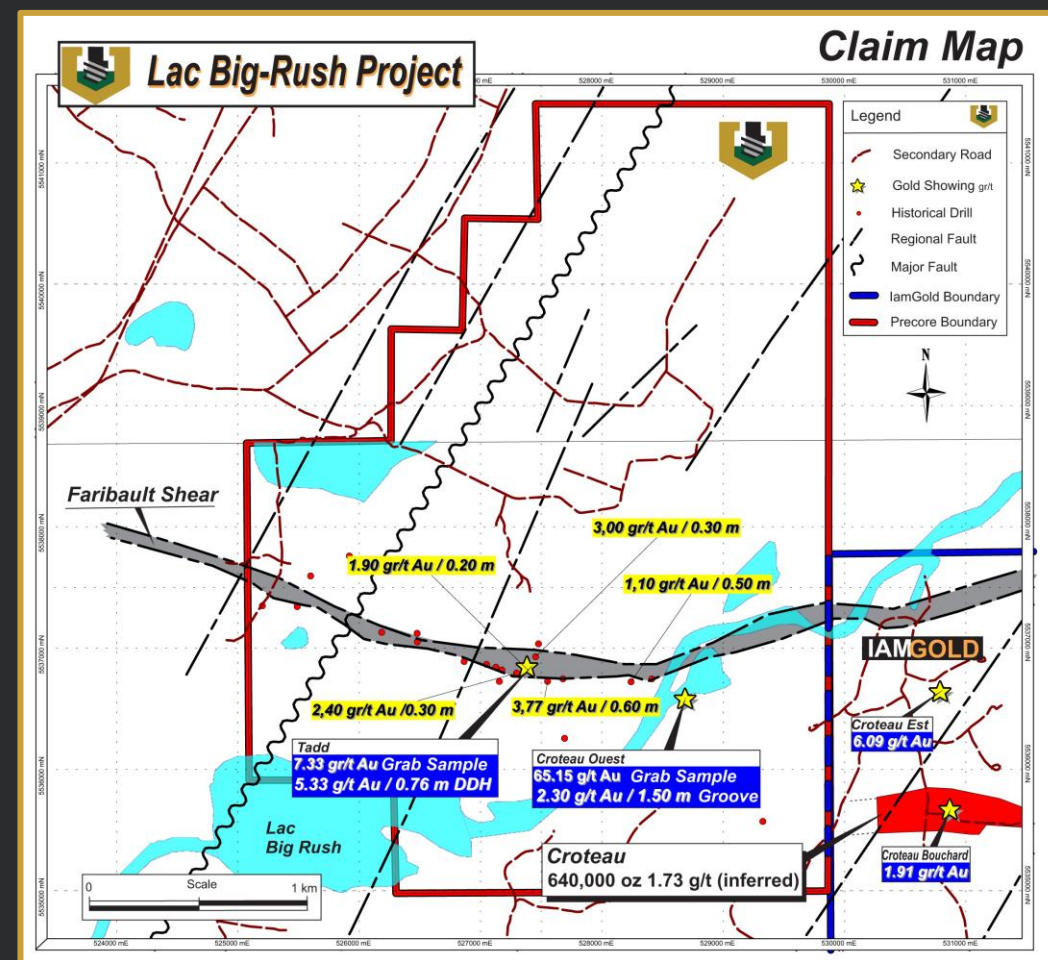
¹ Technical Review & Evaluation of the Exploration Potential of the "Lac Chibougamau" Mining Properties, in McKenzie, Roy, Obalski and Lemoine Townships, Abitibi Mining District, Province of Québec NTS 32G16, for Chibougamau Independent Mines Inc. and Globex Mining Enterprises Inc. Larouche C., 2012.

²<https://iamgold.com>

³Gestim, May 2025

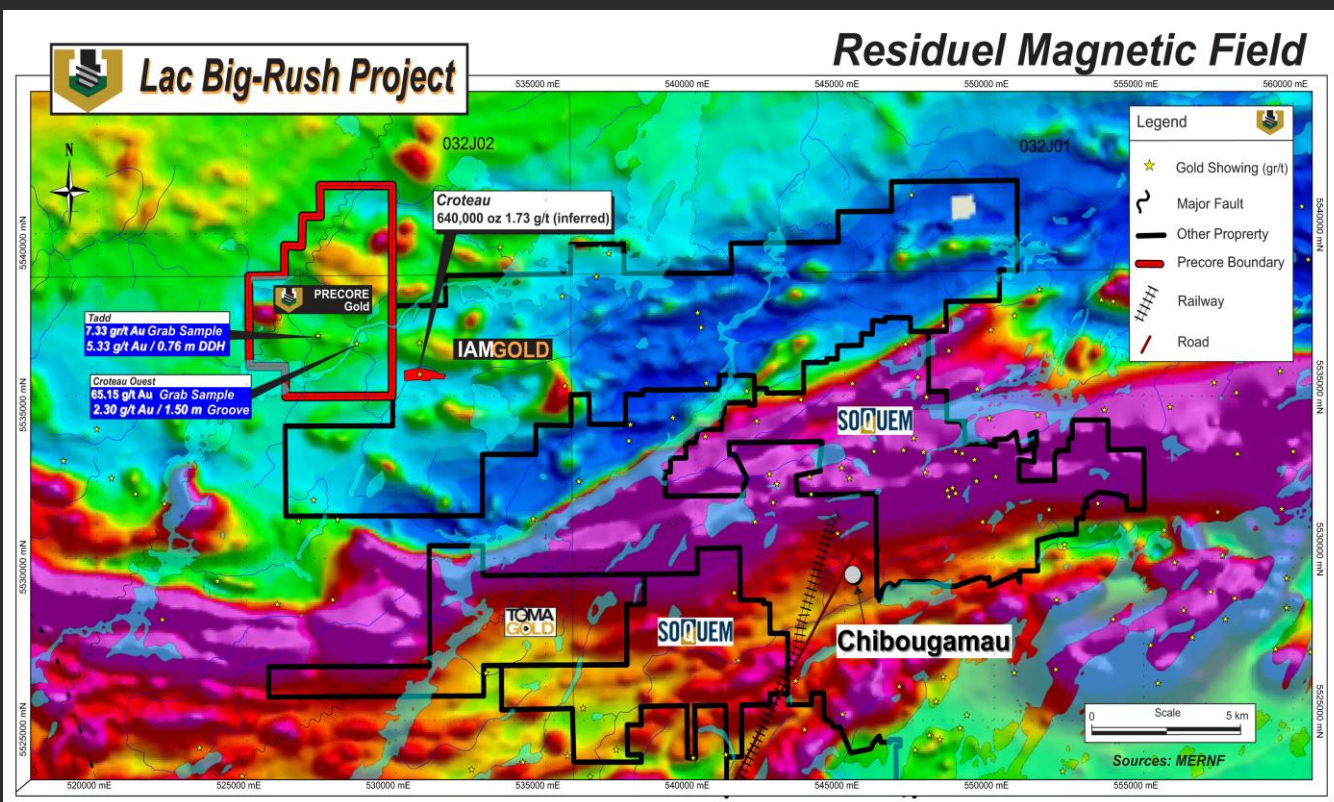
The Lac Big-Rush Project – Historical Work

- Has had limited exploration work performed from the early 1950's until the early 1980's, when Noranda drilled approximately 10 diamond drill holes.
- Two historical gold showings, Tadd and Croteau West, are listed in the Province Sigeom database.
 - The Tadd showing interpreted as a 2.3 meters wide mineralized quartz vein on average followed over 50 meters of strike length.
 - The mineralized structure has an east-west orientation and is strongly dipping.
 - Two grab samples returned 7.33 and 5.33 grams per tonne Au respectively (Sigeom).
 - The Croteau West showing located about 2.5 km east of the Tadd showing is an outcropping mineralized occurrence.
 - A grab sample returned 65.15 g/t Au and a channel sample returned 3.0 g/t Au over 1.5 meters during Cree Mineral Exploration Board 2018 prospecting program (assessment report GM-71214).



Map of Lac Big-Rush including location of historical showings

The Lac Big-Rush Project – Regional Magnetic Survey Data Interpreted



Map of Lac Big-Rush project location within geological setting*

➤ High-resolution airborne magnetic surveying, including tilt-angle data retrieval (TDR), identified several major structural corridors oriented E-W to ENE, are interpreted as shear zones favorable to gold mineralization.

➤ The results indicate:

- continuous magnetic lineaments extending over several kilometers
- areas of low magnetic signature associated with alteration
- structural intersections considered as priority targets

Geophysical data interpretation suggests a signature that is identifiable with the IamGold Croteau sector; several indicators point to a similar correlation, suggesting a plausible extension of the Croteau zone towards the west.



Kimber Project

Image: Sullivan Mine, Teck Archives

The Kimber Project – British Columbia, Canada

- 100% owned Kimber property is located approximately 14.5km north of Kimberly, BC at 1,325 meters elevation and comprised of 5 continuous mineral claims covering an area of 2,231 ha.
- Part of the region's Fort Steele Mining Division and 13km north of Teck's past producing Sullivan Mine, which produced lead, zinc, silver from 1909 to 2001.
- Contained within Mesoproterozoic siliciclastic rocks belonging to the Purcell Supergroup, specifically the Kitchener and Creston formations. (Höy, 1993).
- Historic rock sampling assay values of 0.23 % Cu, and 0.107 g/t Au were reported from a surface sample from the Kimber Property (Sample CK16-44, Kennedy, 2017)¹.
- Fall 2024 soil survey campaign strengthened and expanded the 2022 soil anomalies and identified several new gold and copper anomalies, as well as widespread barite anomalies in the area of the grid.
- Considering a further work program in the future to test the new anomalies.



Map of Kimber location access to location

¹ NI 43-101 Technical Report, June 3, 2022.

Capital Structure – At May 5, 2026

Shares outstanding	32,059,340		
Warrants	6,665,915	@0.15\$-0.25\$	Exp. 2026-2028
Brokers warrants	344,600	@0.10\$	Exp. 2026
Options	1,100,000	@0.135\$	Exp. 2030
Shares fully diluted	40,169,855		

Detailed Breakdown Share Ownership	
Management SEDI Ownership	34.7%
Top Holders (incl. Fortescue)	20.8%
Public float	44.5%
CSE: PRCG	

Precore Gold Corp. – Investment Highlights

01



MAXIMIZING SHAREHOLDER VALUE

Emphasis on delivering returns during favorable gold market conditions.

03



PRIME PROJECT LOCATIONS

Diverse assets located in stable, mining-friendly Tier-1 jurisdictions.

02



PROVEN LEADERSHIP

Experienced board and advisors with history of discovering and advancing top-tier gold projects.

04



STRONG OWNERSHIP STRUCTURE

Focus on capital management, minimizing dilution and strong insider commitment.

Contact Us

For investor inquiries, contact:
Investor Relations at:

investor@precoregold.com
www.precoregold.com



CSE: PRCG

